

SC fast connector

1, Description

Field Assembly SC connector can provide a quick and easy termination of fibers in the field and options are available for 900 micron allowing the installer to terminate and make connection in minutes at equipment and fiber patch panels. This connector system removes any requirement for epoxy, adhesives or costly curing ovens.

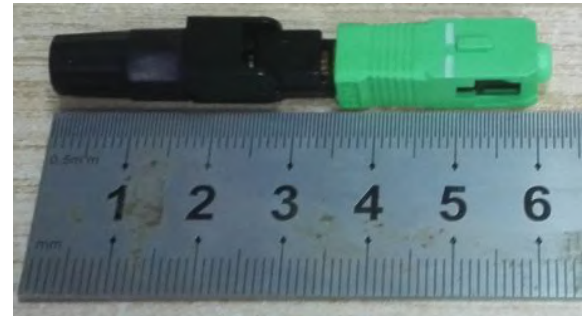
2, Feature

- Factory-installed fiber stub
- No epoxy or polishing required
- Quick and easy fiber termination in the field
- Eliminates cable excess length and pigtail splice storage
- Cost effective



3, Applications

- Patch panels
- Distribution frames
- Maintenance or emergency restoration of fiber networks
- FTTH Outlets
- Connection at the desk for LAN environments



4, Specification

Applicable for	3.1x2.0mm drop cable or 3.0/2.0/0.9mm cable
Optical fiber diameter	φ125um (657A&657B)
Tight buffer diameter	φ250um
Fiber mode	Single mode
Operation time	About 10s (exclude fiber cut)
Insert loss	≤0.5dB (1310nm & 1550nm)
Return loss	≥45dB
Fastening strength of naked fiber	≥ 5N
Tight clamping force cladding	≥ 8N
Tensile strength	≥ 50N
Using temperature	-45°C~+80°C