

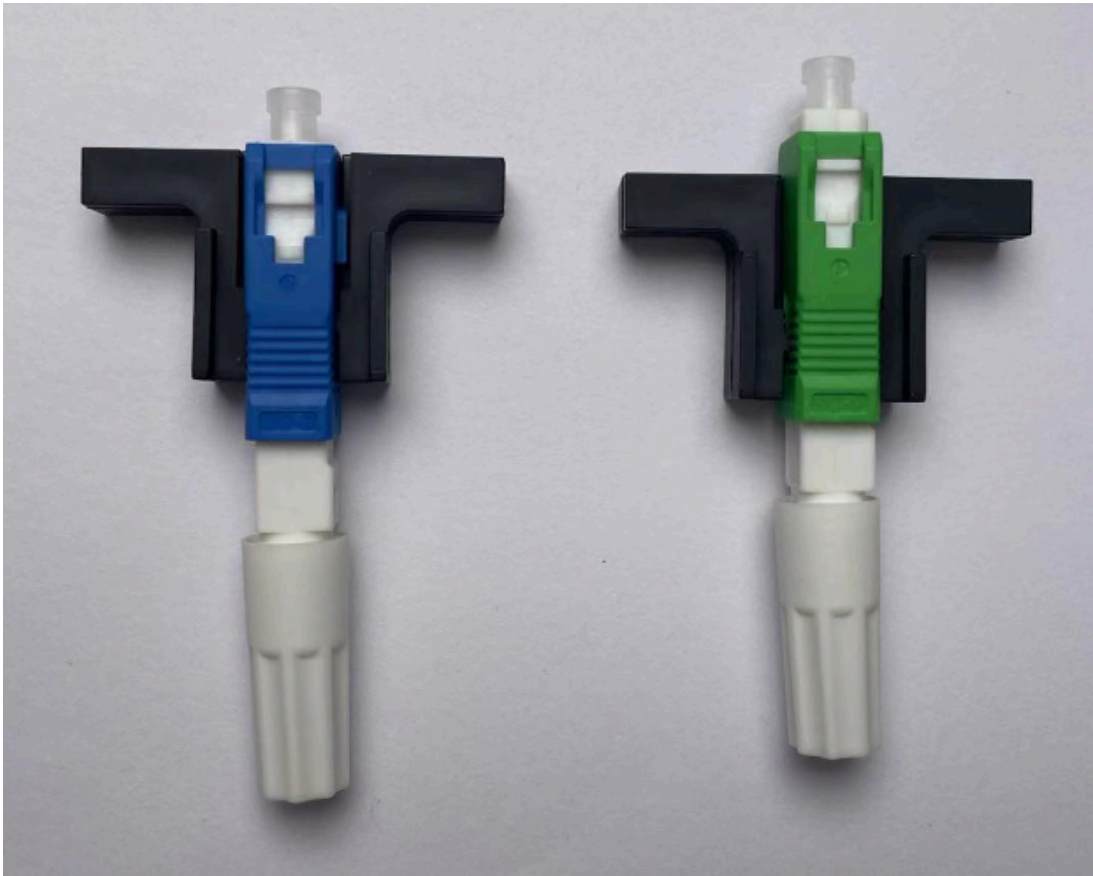
# SC - Aircraft Nut Type Quick Assembly Connector

## SC - 飞机款螺帽型光纤快速连接器

### Introduction

Quick Assembly SC connector can provide quick and easy terminations of fibers in the field. It allows the installer to terminate and make connection in minutes at equipment and fiber patch panels.

This connector system with features of high installation quality, high success rate and high reliability. Applicable to 2\*3,2\*1.6 cables.



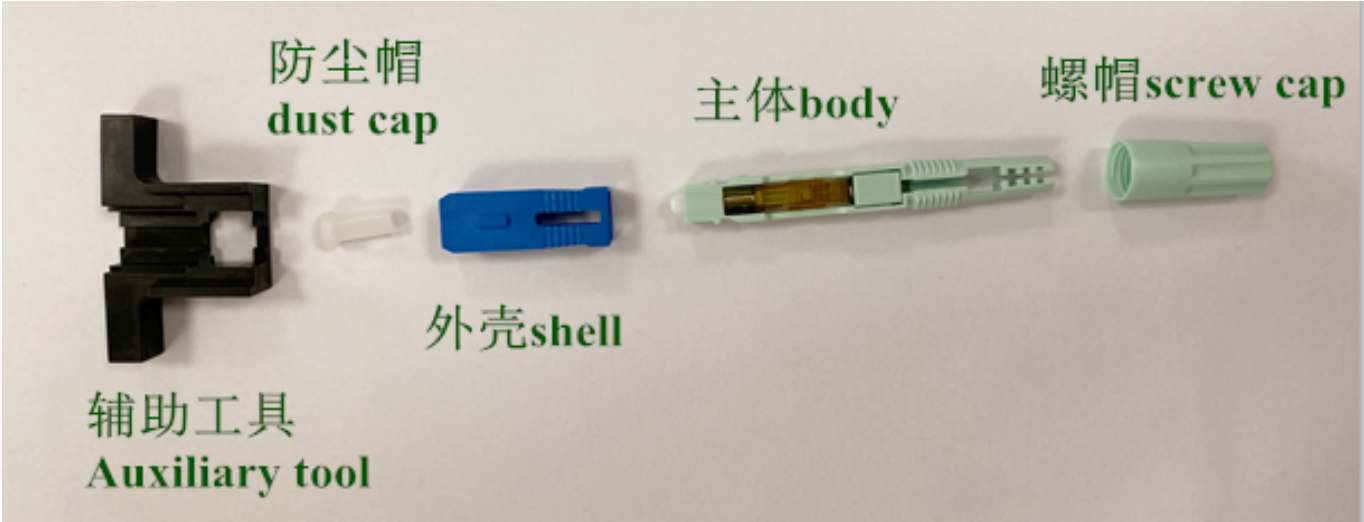
### Specifications

Parameters	Value		Parameters	Value
Insertion Loss	Average $\leq 0.3$ DB, max $\leq 0.5$ DB		Repeatability (500 Mating Times)	Average $\leq 0.3$ DB, max $\leq 0.5$ DB
Return Loss	$\geq 45$ dB		Temperature cycle	

Tensile strength	F>50N		Vibration test	
Operating Temperature	-20 ~ +75C°		Flooding test	
Storage Temperature	-40 ~ +85C°		Tensile strength	F>50N

Operation Instruction

Product Components



Necessary Tools



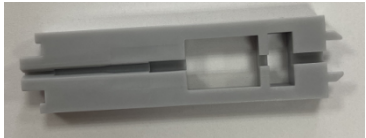
Model: LTS-242  
FTTH Drop Cable Stripper



LTS-212/213  
Fiber Stripper



LFC-300  
Fiber Cleaver



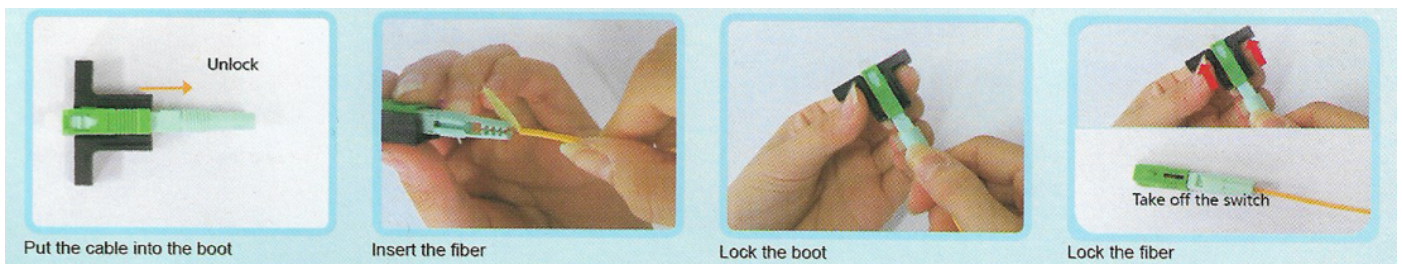
Cutting Clamp

## Operation Steps:

### 1.Process the fiber

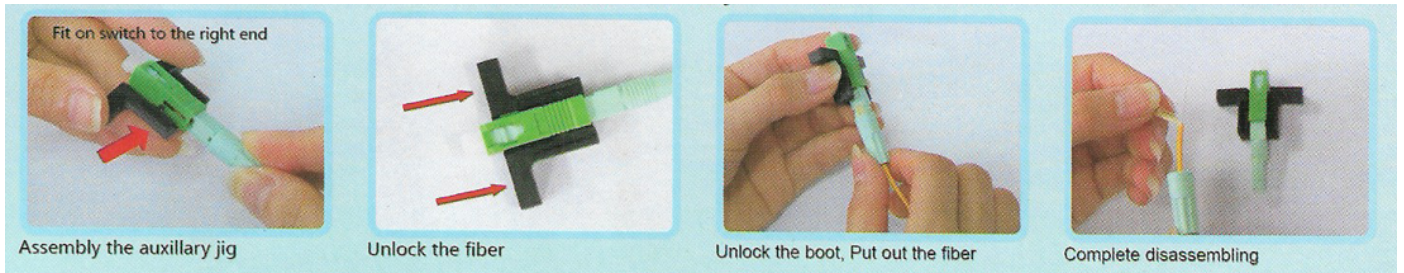


### 2.Assembly



### 3.Disassembly





## Ordering Information

Sample : SC/APC & SC/UPC , Type Nut

Connector		Type No.		PC/APC	
1	SC	Nut	Nut	1	UPC
				2	APC



## Packing :

Opp bag/pc

100pcs/inner box

Inner box size:23\*21\*11.3cm

1000pcs/carton

Carton size:59\*44\*24.5cm

Weight:8.0 Kg