
FAB-HGT-16B Fiber Distribution Box



1、 Description:

FAB-HGT-16B Fiber Distribution Box provides a high density wall mounted solution for next generation networks, which aims to provide and manage maximum numbers of fiber termination in a limited space. It is normally installed in the way of wall mounting or pole mounting.

2、 Specification:

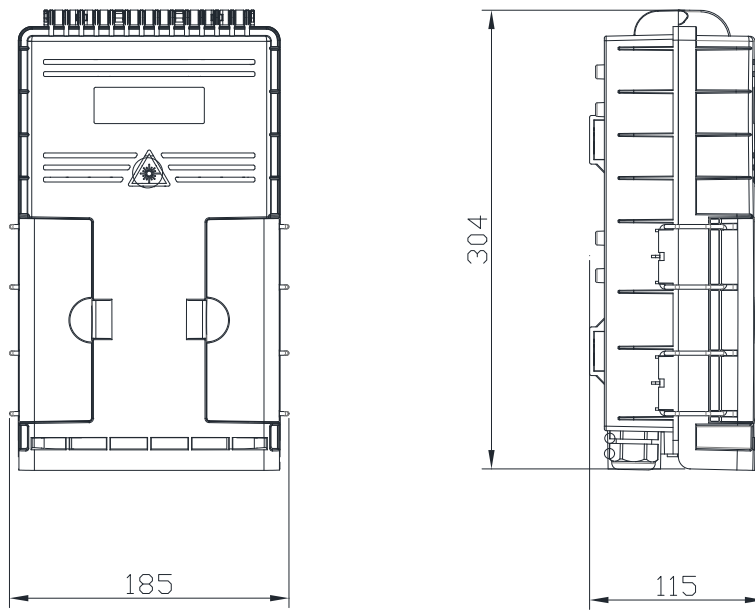
- 1) Water-proof design with IP65 Protection grade.
 - 2) Integrated with splice cassette and cable management system.
 - 3) Manage fibers in a reasonable fiber radius condition.
-

-
- 4) Fiber bend radius control more than 35mm.
 - 5) 1 uncut cable port for feeder cables.
 - 6) Fixed hermetic seals in all its grooves
 - 7) The entire fiber route protected by transport tube
 - 8) Complete opening of the hinges with stop included
 - 9) Protected and organized pigtail space
 - 10) Protection of Splitters and Pigtails
 - 11) Support customized services such as logo screen printing.

3、 Configuration Table

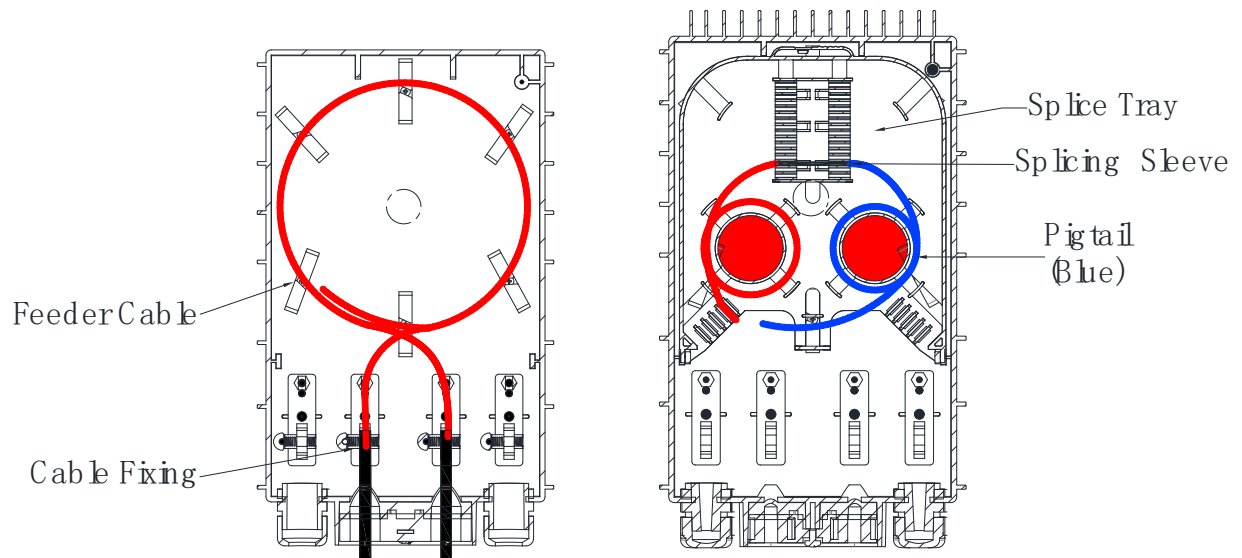
Model	FAB-HGT-16B
Size (Pic 1)	H×W×D = 304×185×115 (MM)
Material	PC+ABS
Color	Black/White/Gray(Customizable)
Splice Capacity	36 Cores
Splitter Capacity	2 Sets
Splitter Type	SC, Mini Type, 1:2 / 1:4 / 1:8/1: 16
Adapter Type	SC
Adaptor Capacity	18 Pcs
Incoming Cable Port	2x(Φ10~14mm), 1x Mid-span 10~14mm
Drop Cable Port	16 Ports
Installation Method	Wall, Pole Mounted
Operating tempertaure	-10~+70℃
Life time	25 years

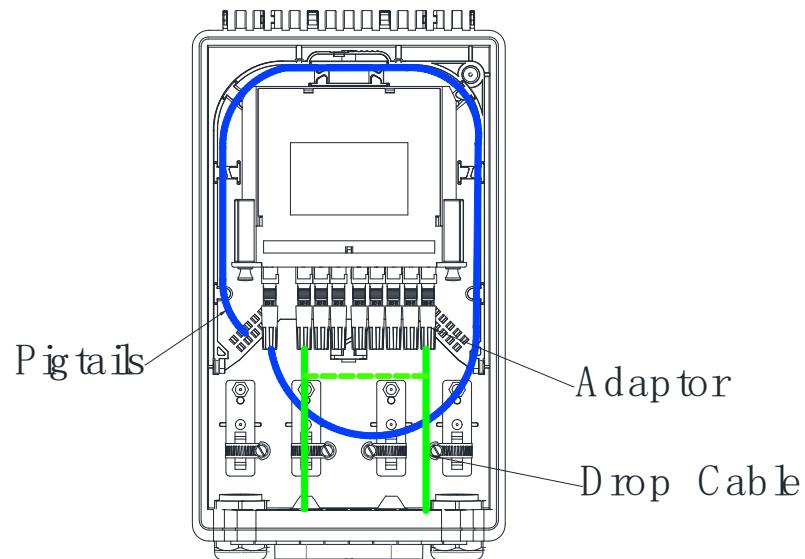
Table 1 Model and configuration



Pic 1

4. Routing (Pic 2~3)





Pic 2

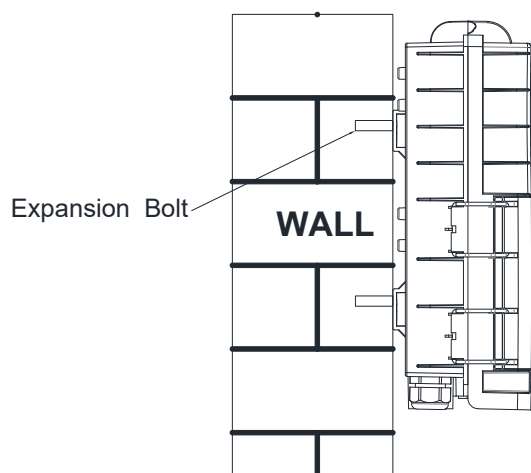
5、 Installation

5.1 Wall-mounted installation

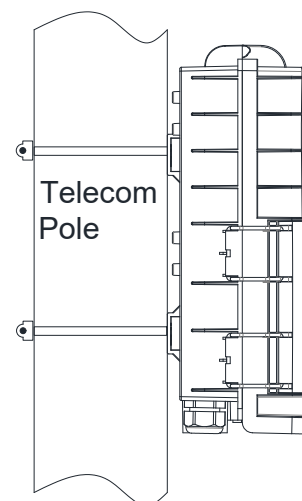
Drill 4 holes in the wall according to the installation size, place the expansion bolt, place the box to match up the holes and use bolt to fasten (Pic 4) .

5.2 Pole-mounted installation

Fix 2 set of the hose clamps to the telecom pole . (Pic 5)



Pic 4



Pic 5