

---

## FAB-HGT-16A Fiber Distribution Box



### 1、Description:

FAB-HGT-16A Fiber Distribution Box provides a high density wall mounted solution for next generation networks, which aims to provide and manage maximum numbers of fiber termination in a limited space. It is normally installed in the way of wall mounting or pole mounting.

### 2、Specification:

- 1) Water-proof design with IP65 Protection grade.
  - 2) Integrated with splice cassette and cable management system.
  - 3) Manage fibers in a reasonable fiber radius condition.
  - 4) Fiber bend radius control more than 35mm.
-

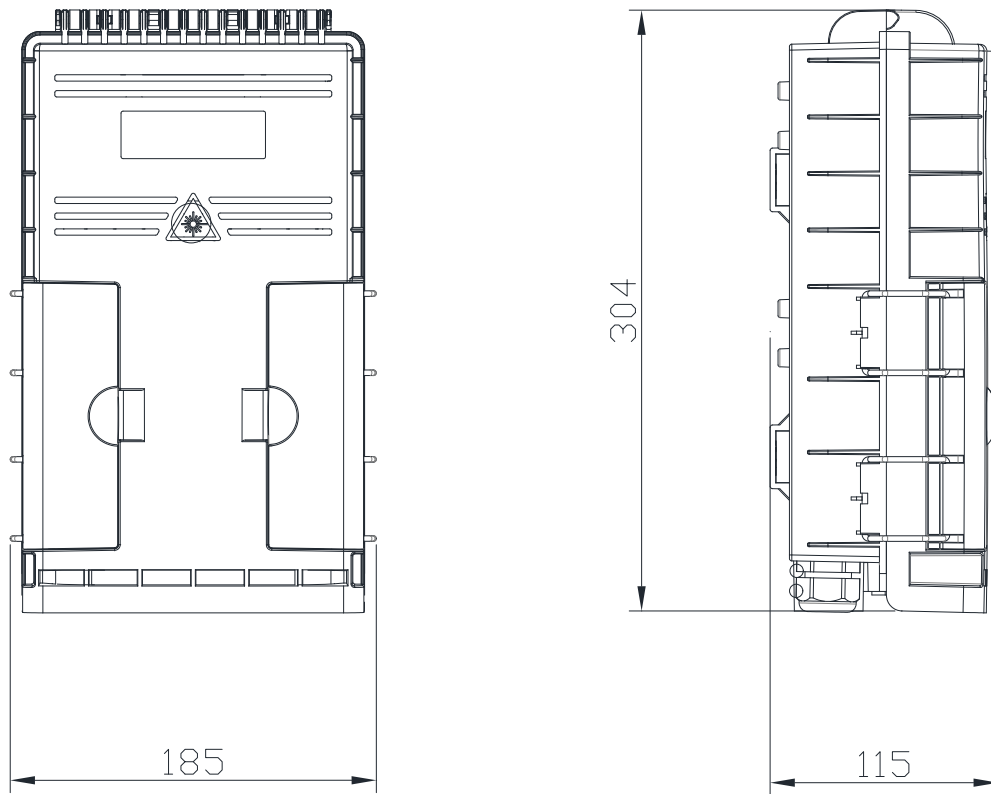
- 
- 5) 1 uncut cable port for feeder cables.
  - 6) Fixed hermetic seals in all its grooves
  - 7) The entire fiber route protected by transport tube
  - 8) Complete opening of the hinges with stop included
  - 9) Protected and organized pigtail space
  - 10) Support customized services such as logo screen printing.

### 3、 Configuration Table

<b>Model</b>	FAB-HG-16A
<b>Size (Pic 1)</b>	H×W×D = 304×185×115 (MM)
<b>Material</b>	PC+ABS
<b>Color</b>	Black/White/Gray(Customizable)
<b>Splice Capacity</b>	36 Cores
<b>Splitter Capacity</b>	2 Sets
<b>Splitter Type</b>	SC, Mini Type, 1:2 / 1:4 / 1:8
<b>Adapter Type</b>	SC/APC
<b>Adaptor Capacity</b>	18 Pcs
<b>Incoming Cable Port</b>	2x(Φ10~14mm), 1x Mid-span 10~14mm
<b>Drop Cable Port</b>	16 Ports
<b>Installation Method</b>	Wall, Pole Mounted
<b>Operating tempertaure</b>	-10~+70℃
<b>Life time</b>	25 years

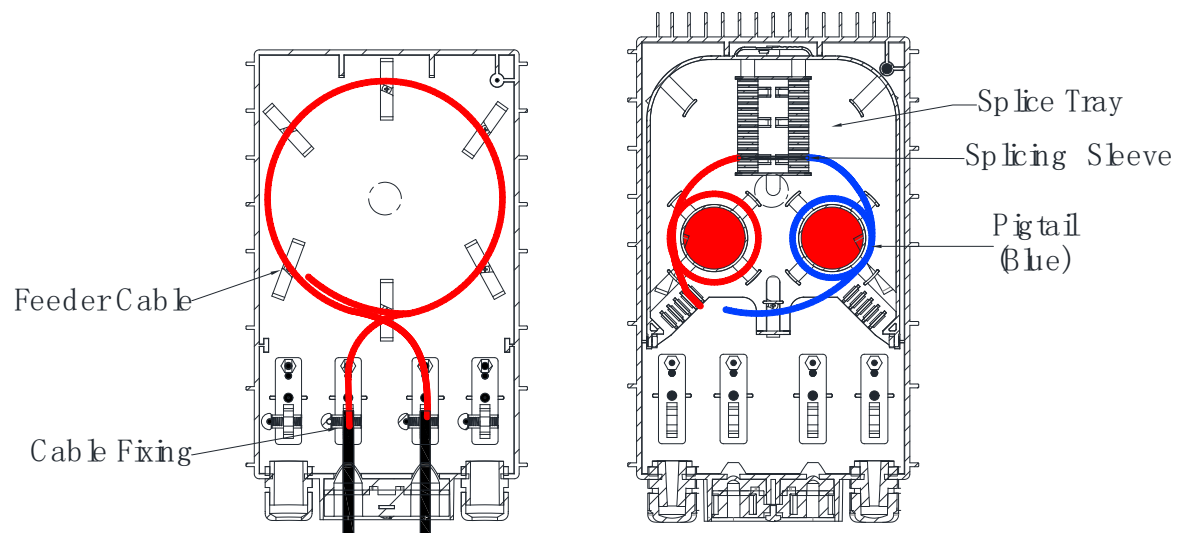
Table 1 Model and configuration

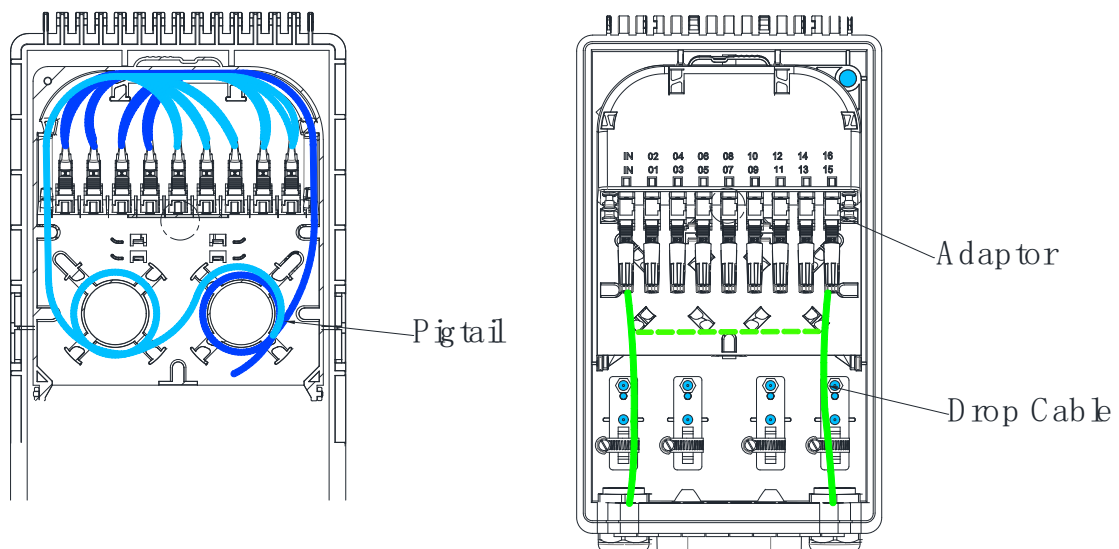
---



Pic 1

#### 4、Routing (Pic 2~3)





Pic 2

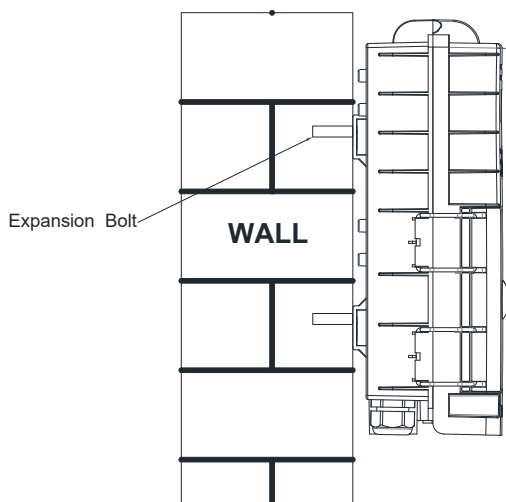
## 5、Installation

### 5.1 Wall-mounted installation

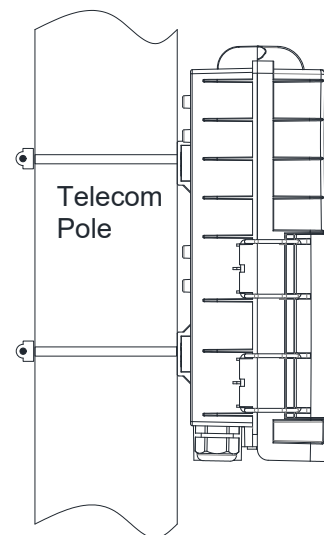
Drill 4 holes in the wall according to the installation size, place the expansion bolt, place the box to match up the holes and use bolt to fasten (Pic 4) .

### 5.2 Pole-mounted installation

Fix 2 set of the hose clamps to the telecom pole . ( Pic 5 )



Pic 4



Pic 5